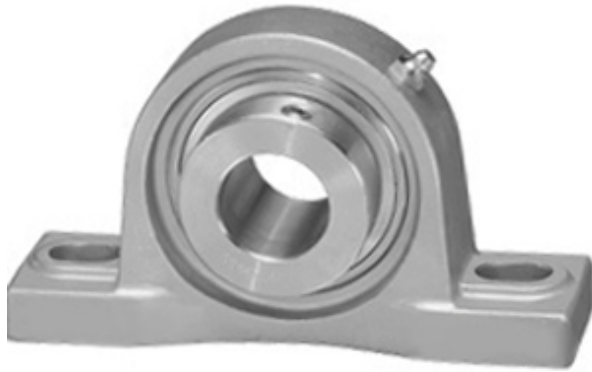




NTN BEARING-SUDAMERICANA, S.A.

1.5 Inch | 38.1 Millimeter x 2.122 Inch | 53.9 Millimeter x 1.938 Inch | 49.225 Millimeter IPTCI SNASP 208 24 Pillow Block Bearings



SNASP 208 24 Bearing 2D drawings and 3D CAD models

Bearing No. SNASP 208 24

Category	Pillow Block Bearings
Inventory	4.0
Manufacturer Name	IPTCI BEARINGS
Minimum Buy Quantity	N/A
Weight	2.54
Product Group	M06110
Number of Mounting Holes	2
Mounting Method	Eccentric Collar
Housing Style	2 Bolt Pillow Block
Rolling Element	Ball Bearing
Housing Material	Stainless Steel
Expansion / Non-expansion	Non-expansion
Mounting Bolts	1/2 Inch
Relubricatable	Yes
Insert Part Number	SNA208-24
Seals	B Seal
Housing Configuration	1 Piece Solid
Inch - Metric	Inch
Other Features	Single Row Corrosion Resistant Has Slinger
Long Description	2 Bolt Pillow Block; 1-1/2" Bore; 1-15/16" Base to Center Height; Eccentric Collar Mount; Ball Bearing; Relubricatable; Stainless Steel; B Seal; Non-expansion



NTN BEARING-SUDAMERICANA, S.A.

Category	Pillow Block
UNSPSC	31171511
Harmonized Tariff Code	8483.20.40.40
Noun	Bearing
Keyword String	Pillow Block
Manufacturer URL	http://www.iptci.com
Manufacturer Item Number	SNASP 208 24
Weight / LBS	5.6
Bolt Spacing Maximum	0 Inch 0Millimeter
Nominal Bolt Center to Center	5.4 Inch 136 Millimeter
B	1.938 Inch 49.225 Millimeter
Actual Bolt Center to Center	5.4 Inch 136Millimeter
Bolt Spacing Minimum	0 Inch 0Millimeter
d	1.5 Inch 38.1 Millimeter
D	2.122 Inch 53.9 Millimeter